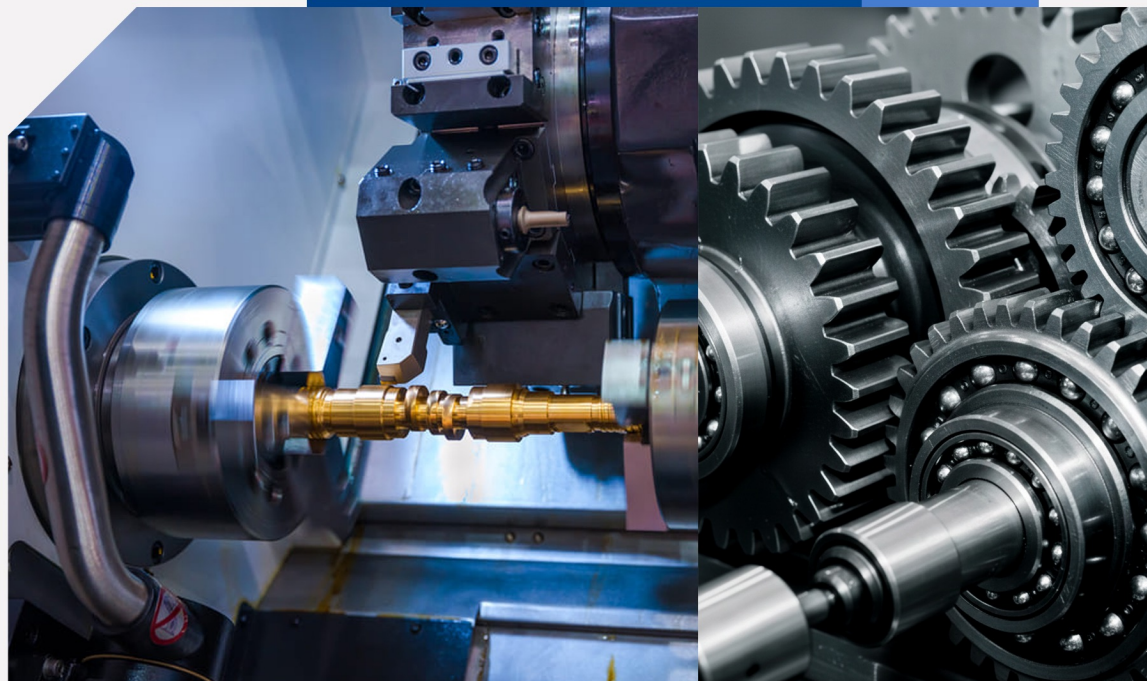


JG **PROMECMACHINING** JG AUTOMOTIVE GROUP

Corporate Dossier



JG PROMECMACHINING
JG AUTOMOTIVE GROUP

JG AUTOMOTIVE GROUP
Your partner in metal solutions



ABOUT US

Since December 2025, **Promec Vallès** has been operating as **JG Promec Machining**, becoming part of the **JG Automotive Group**. This integration strengthens our ability to deliver innovative and efficient **CNC machining and prototyping solutions** on a global scale.

Based in **Parets del Vallès (Barcelona)** and with **over 50 years of experience**, we stand out for our specialization in **high-precision CNC machining** and **prototype development**, as well as for our strong customer-focused approach. We rely on a highly skilled team and advanced technical resources to provide **end-to-end solutions** tailored to each project.

As part of **JG Automotive**, we remain fully committed to **quality, reliability, and added value** in every component we manufacture.



JG PROMECMACHINING

JG AUTOMOTIVE GROUP
customers

DIRECT CUSTOMERS

 **ROTHENBERGER**

 **HIAB**

GRIFOLS

 **Dara**
Pharmaceutical Equipment



JG AUTOMOTIVE

JG Automotive was founded in **1982**, specializing in the **manufacturing, development, and supply of metal and mechanical components** for the **automotive and industrial sectors**.

In **2002**, together with **18 international partners**, we founded **Global Alliance Automotive**, a group comprising **230 engineers working in collaboration**. The alliance includes manufacturers in **Brazil, Germany, China, India, Italy, Japan, South Korea, and the United States**, among others, managing a **combined turnover of €1.72 billion**.

JG Automotive is a benchmark supplier and manufacturer of **custom-designed metal components** for automotive and general industrial applications, using the **most advanced technologies** in **forging, casting, machining, stamping, screw machining, and sintering**. Thanks to our expertise in these production technologies, we have **diversified the industrial sectors we serve** and **optimized our operational processes**.

JG AUTOMOTIVE

Your partner in metal solutions

customers

AUTOMOTION

DIRECT CUSTOMERS



- Baires (Buenos Aires)
- Gestamp Navarra
- Edscha Automotive GmbH Hengersberg
- Bielefeld Unformtechnik GmbH.
- Cerveira Lda.
- Esmar
- Global Tooling S.L.
- Puebla Sa De Cv
- Vendas Novas Unipessoal



- Alcasting
- Goian
- Forjas Minas
- Gameko
- Mar Sk Ro
- Mecauto
- Vilanova
- Nova Recid
- Recitec
- Zdanice
- Egaña



- Kober
- SAS
- Paderborn



- Polska
- SaDeCv



- ITW Mikalor
- ITW Global Fastener España
- ITW Shakeproof
- ITW Rivex



- ZF Friedrichshafen AG
- ZF Hungaária KFT
- ZF Boutheaon S.A.S
- ZF do Brasil
- ZF Kama



- Altan Plastik
- Aptiv
- Irfan Plastik
- OcakKalip



- Pontedera



- JD Germany
- JD USA
- JD Spain

INDIRECT CUSTOMERS



- Adient | Alagon
- Adient | Calatorap



- Kayaba Suspensions Europe



- Sekurit Spain
- Sekurit Portugal



JG AUTOMOTIVE

Your partner in metal solutions

customers

| AUTOMOTION

DIRECT CUSTOMERS

• **A P T I V** •

 **OFFICINE VICA**

 **dehta**


TRISTONE


DEUTZ

- Grupo Riza
- ABC Plásticos
- Promot Zakłady Metalowe
- Schmittergroup AG
- Thermolympic S.L.
- Vactron S.A
- Apinex
- Argus Fluidhandling LTD.
- Booster Precision Industrial
- BST Rods
- Cigüeñales Sanz
- Comercial de La Forja
- Dresser-Rand
- Industrias Ochoa
- Kendrion GmbH
- Industrias Cántabras Torneado (I.C.T.)

INDIRECT CUSTOMERS

 **MANN+HUMMEL**

 **ANTOLIN**

 **RENAULT**

- Cikautxo
- Edscha
- Freudenberg
- MMM Autoparts
- Montajes Abrera
- NSG Pilkington
- Pierburg

JG AUTOMOTIVE

Your partner in metal solutions

customers

INDUSTRY

DIRECT CUSTOMERS

- AMPO
- Axolia Luxembourg
- CAF Signalling
- Diametal SAS France S.A.S.
- Expal
- Electrowatt France
- Grupo Klam
- Grupo Betico
- Hitachi
- Grupo Defontaine
- Hellstens Mecaniska AB
- Comexi
- Flex
- Rotrans
- MRO Defence S.L.
- Mondragon Group
- Ros Roca
- Rexnord Flaptop Europe
- Sedecal
- Thielmann Spain
- TSK Flagsol GmbH
- United Tech. (UTC)
- Wistra GmbH
- Vilisto GmbH
- Roquet
- Zitron S.A.
- Multi-Wing
- Araven

AGRICULTURE

DIRECT CUSTOMERS

- Bellota
- CBM S.p.A.
- Osmag
- Capilla
- Sistemas Horticolas Almeria
- Tenias
- Agrimac

INDIRECT CUSTOMERS

- Columbia Gear Corporation

ELEVATION

DIRECT CUSTOMERS

- HIAB
 - HIAB Finland Oy
 - HIAB Poland SP Z.O.O
 - HIAB Sweden AB
 - HIAB Shanghai
 - DEL Equipment Ltd
 - HIAB Cranes S.L.
 - Waltco Lift Corporation
- Cemvisa Vicinay
- MP Componentes
- Stacker
- Wittur
- Zardoya Otis

WIND ENERGY

DIRECT CUSTOMERS

- Hine
- Vestas®
- Siemens Gamesa
- Glual

NAVAL

DIRECT CUSTOMERS

- Navantia
- MG Sanders
- Guascor Energy
- Irongrip

RAILWAY

DIRECT CUSTOMERS

- Stadler Valencia
- Vossloh España
- Barat Group
- Alstom
- CAF
- Refis

BUSES

DIRECT CUSTOMERS

- Hispacold
- Irizar
- Leciñena

MOTORCYCLES

DIRECT CUSTOMERS

- Gas Gas
- Sherco
- Rieju
- Torrot

HIGH-PRESSURE CYLINDERS

INDIRECT CUSTOMERS

- Drager Medical Hispania
- Linde Group
- Marioff Hi-Fog
- Praxair

JG AUTOMOTIVE

Your partner in metal solutions

Internacional presence



HEADQUARTERS

 Madrid

MANUFACTURING PLANTS

 Barcelone

 Vitoria-Gasteiz

 Zaragoza

OFFICES

 Istanbul

 Delhi

 Chennai

 Chongqing

 Ningbo

 Torino

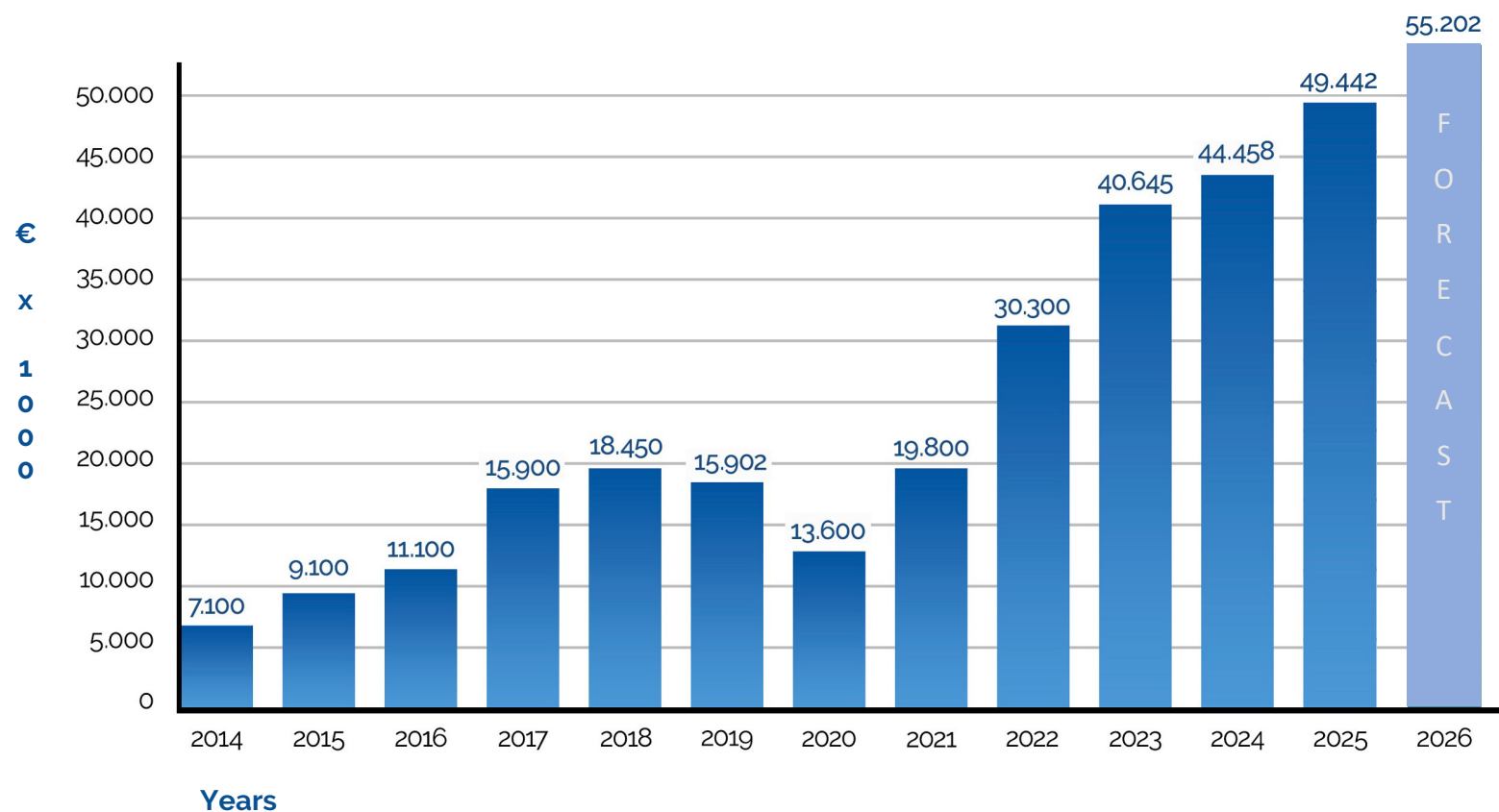
 Barcelone

 Lyon

JG AUTOMOTIVE

Your partner in metal solutions

sales



F
O
R
E
C
A
S
T

- JG AUTOMOTIVE
Your partner in metal solutions
- JG PROMECMACHINING
JG AUTOMOTIVE GROUP
- indaraba
- MIMAR
- JG BENDING STAMPING
JG AUTOMOTIVE GROUP

HIGH-PRECISION CNC MACHINING

At **JG Promec Machining**, we specialize in **high-precision CNC machining**, delivering advanced solutions for both **single-part manufacturing** and **series production**.

Our approach combines **precision engineering**, **cutting-edge technology** and **fully automated processes**, ensuring **reliable results** and **top-tier quality**.

Machining Technology

- **Technical precision.** Each component is manufactured under strict dimensional controls, ensuring tight tolerances and a flawless finish.
- **Prototyping flexibility.** From single parts to small production runs, we adapt our processes to the specific needs of each customer.
- **Automated processes.** Our advanced CNC systems enable efficient production, reducing errors and optimizing lead times.
- **Guaranteed quality.** We meet the highest industrial quality standards, backed by the experience and know-how of the **JG Automotive Group**.
- **Specialized technical team.** Our highly qualified professionals oversee every stage of the process, ensuring **reliability** and **excellence** in every project.



CNC MACHINING



All our **CNC machining processes** are aligned with the most demanding standards of **quality, safety and sustainability**, incorporating thorough controls at every stage of production.

This commitment positions us as a **strategic supplier** for companies seeking **technical excellence, production continuity** and **environmental responsibility**.

RAPID PROTOTYPING

At **JG Promec Machining**, we specialize in **rapid prototyping**, delivering advanced solutions to accelerate product development and validate designs with precision. Through our **high-precision engineering**, **cutting-edge technology** and **automated processes**, we manufacture **functional and reliable prototypes** within reduced lead times.

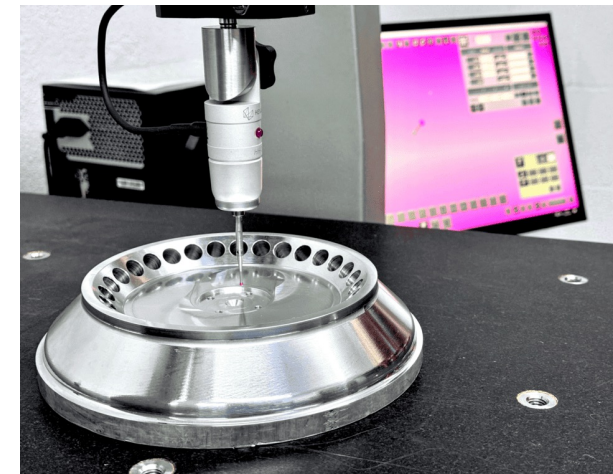
Applications

- Components for the **automotive industry**.
- Parts for **industrial machinery**.
- Equipment and devices for **technology and energy sectors**.
- Models and functional testing for **new product development**.

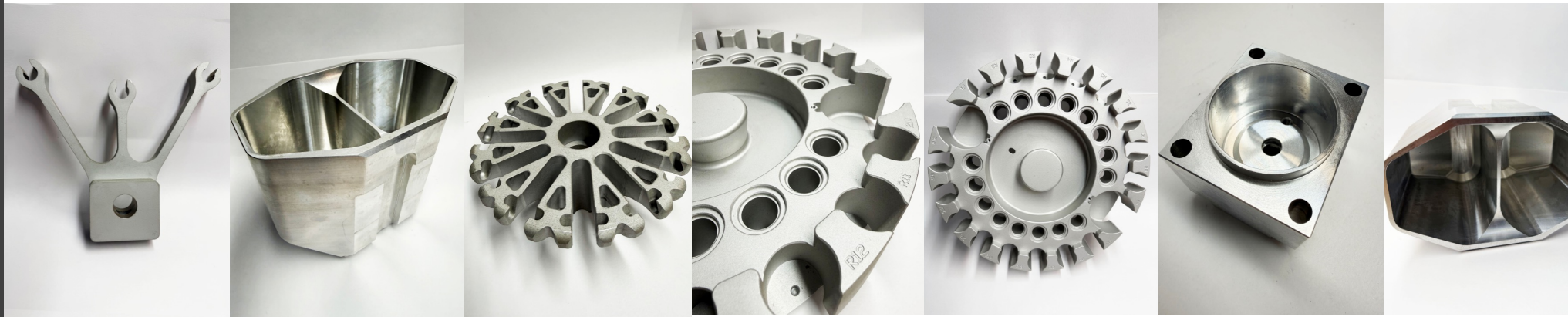
Innovation and Quality

At **JG Promec Machining**, every prototype is the result of **precision engineering** and a controlled process that ensures **efficiency, reliability, and durability**.

We provide **customized solutions** that shorten development timelines and enable our clients to **innovate with confidence**.



PROTOTYPING



At our facility, we manufacture **prototyping parts and products** using advanced production technologies that enable design validation, functionality optimization, and accelerated development timelines.

Thanks to our flexible processes and highly skilled technical team, we deliver **custom-made prototypes** tailored to the specific requirements of each project.

TECHNOLOGY & MACHINERY

At **JG Promec Machining**, we operate with **advanced machinery** and inspection tools that allow us to ensure maximum reliability in every project:

- **5-axis machining centers** up to **800 x 800 mm**
- **3-axis machining centers** up to **1900 x 800 mm**
- **CNC lathes** with **5 axes** and **live tooling turrets**
- **CAD/CAM software** focused on machining process optimization
- **High-precision measuring instruments**, including **coordinate measuring machines, touch probes**, and **vision systems**
- **CMM (Coordinate Measuring Machine)** equipment for in-process and final production control

Thanks to this **advanced technological infrastructure**, we guarantee **quality, repeatability, and reliability** in every machined component, meeting the most demanding industry standards.



JG PROMECMACHINING

JG AUTOMOTIVE GROUP
machinery

TECHNOLOGY & MACHINERY | FACILITIES



JG PROMECMACHINING

JG AUTOMOTIVE GROUP
machinery

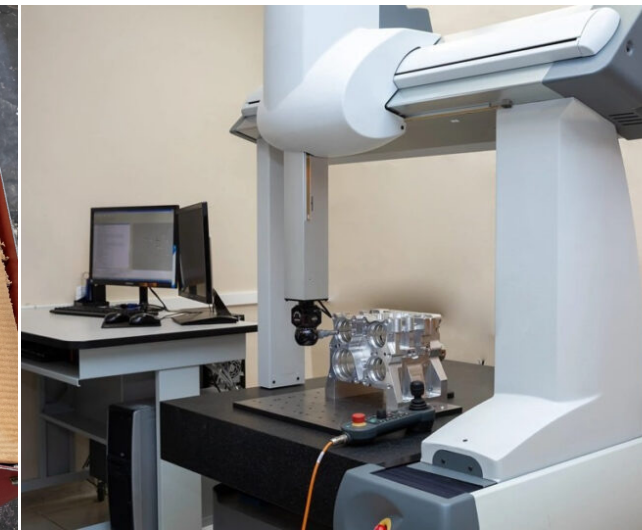
TECHNOLOGY & MACHINERY | FACILITIES



JG PROMEC MACHINING

JG AUTOMOTIVE GROUP
machinery

TECHNOLOGY & MACHINERY | FACILITIES



CERTIFICATIONS

To ensure a company management system focused on quality, **JG Promec Machining** has obtained and implements the certifications appropriate to its activity, always striving to maintain continuous improvement in both product and process.

IATF 16949:2016



Scheduled for Q4 2026

UNE-EN ISO 9001:2015



[View Certificate](#)

CORPORATE POLICIES

The **JG Automotive Group** ensures accurate and up-to-date documentation at every stage of development and production, guaranteeing seamless communication and the highest quality standards.



Socially Responsible Investing



Responsible Minerals Policy



Responsabilidad Social Corporativa

JG PROMECMACHINING
JG AUTOMOTIVE GROUP

JG AUTOMOTIVE GROUP
Your partner in metal solutions



JGPROMECMACHINING.COM

in /in/jgautomotive

JGPROMECMACHINING

JG AUTOMOTIVE GROUP

JG AUTOMOTIVE
Your partner in metal solutions

Av. de la Industria, 32D
28108, Alcobendas
Madrid

JGPROMECMACHINING
JG AUTOMOTIVE GROUP

Carrer de Galileo, 2, Nave 7
08150 Parets del Vallès
Barcelone

+34 91 657 28 74

comercial@jgautomotive.com

JG AUTOMOTIVE GROUP
Your partner in metal solutions



JGPROMECMACHINING
JG AUTOMOTIVE GROUP



JG **BENDING
STAMPING**
JG AUTOMOTIVE GROUP